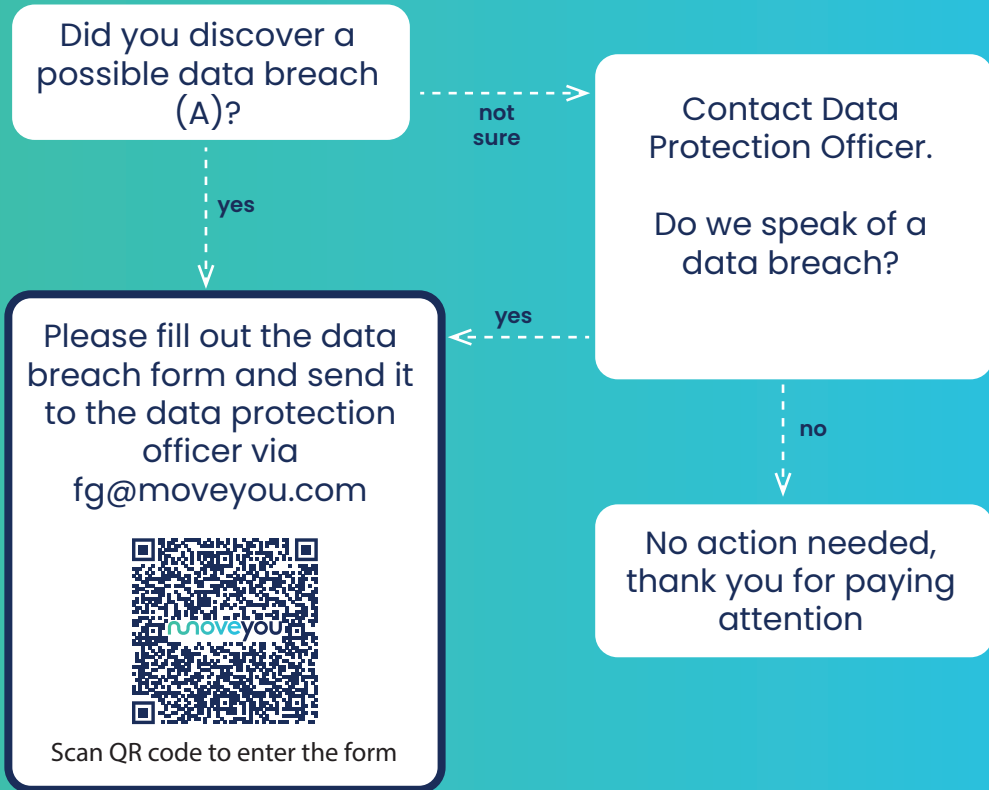
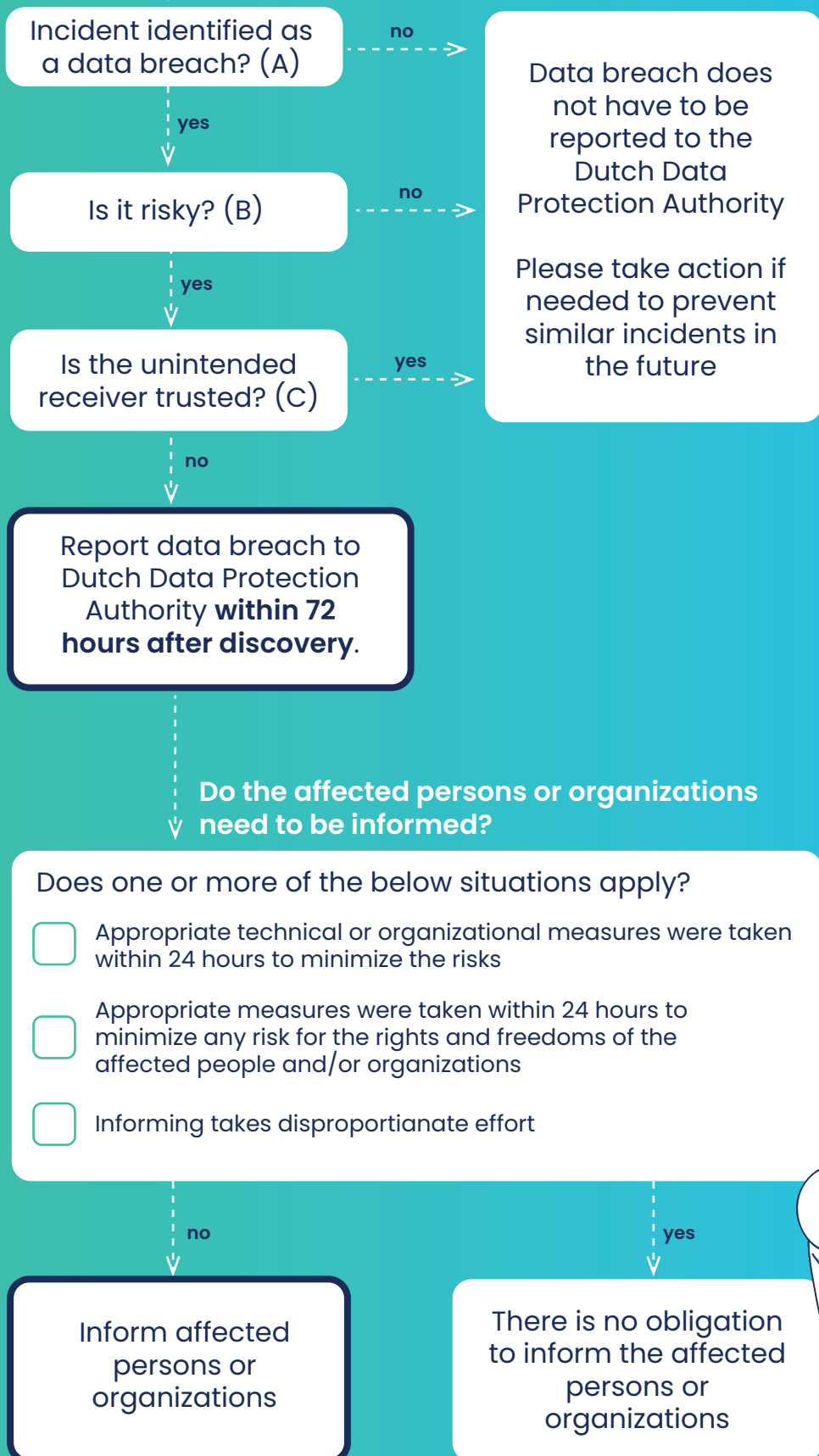


Data breach protocol

You and your colleagues



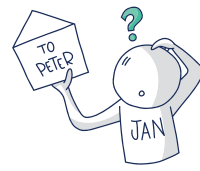
Data protection officer



A What is a data breach?

- Deleted personal data
- Lost personal data
- Stolen personal data
- Changed personal data
- Unauthorised access to personal data

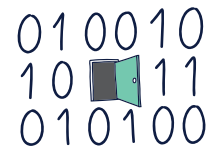
Some examples



Wrong addressed e-mail



Hacker



Problem in code



Bribed employee

B What is a risky data breach?

A data breach is considered risky when there is a chance of:

- psychological damage
- material damage
- fysical damage
- discrimination
- identity theft
- damaged reputation
- financial loss

C Trusted receivers

The following unintended receivers are considered to be trusted:

- The recipient has no bad intentions with the wrongly received data
- The recipient will follow-up instructions like destroying the personal data
- Regular suppliers
- Parties with a professional secrecy

Risky data

Data related to the following are considered risky:

- Race or ethnicity
- Religion
- Genetics of health
- Sexual preferences
- Criminal convictions

Data protection officer
fg@moveyou.com
085-0069099